



1. (1 punto)

1	2	3	4
Base 2 (8 bits)	Base 7	Base 10	Base 16
00100110	53	38	26
10011011	-203	-101	-65

2. (3 puntos)

a)

```
Function CodCia(ByVal num As String) As Integer
    If Mid(num, 1, 2) = "65" Or Mid(num, 1, 2) = "68" Then
        CodCia = 1
    Else
        If Mid(num, 1, 2) = "67" Then
            CodCia = 2
        Else
            If Mid(num, 1, 3) = "666" Then
                CodCia = 3
            Else
                CodCia = 0
            End If
        End If
    End If
End Function
```

b)

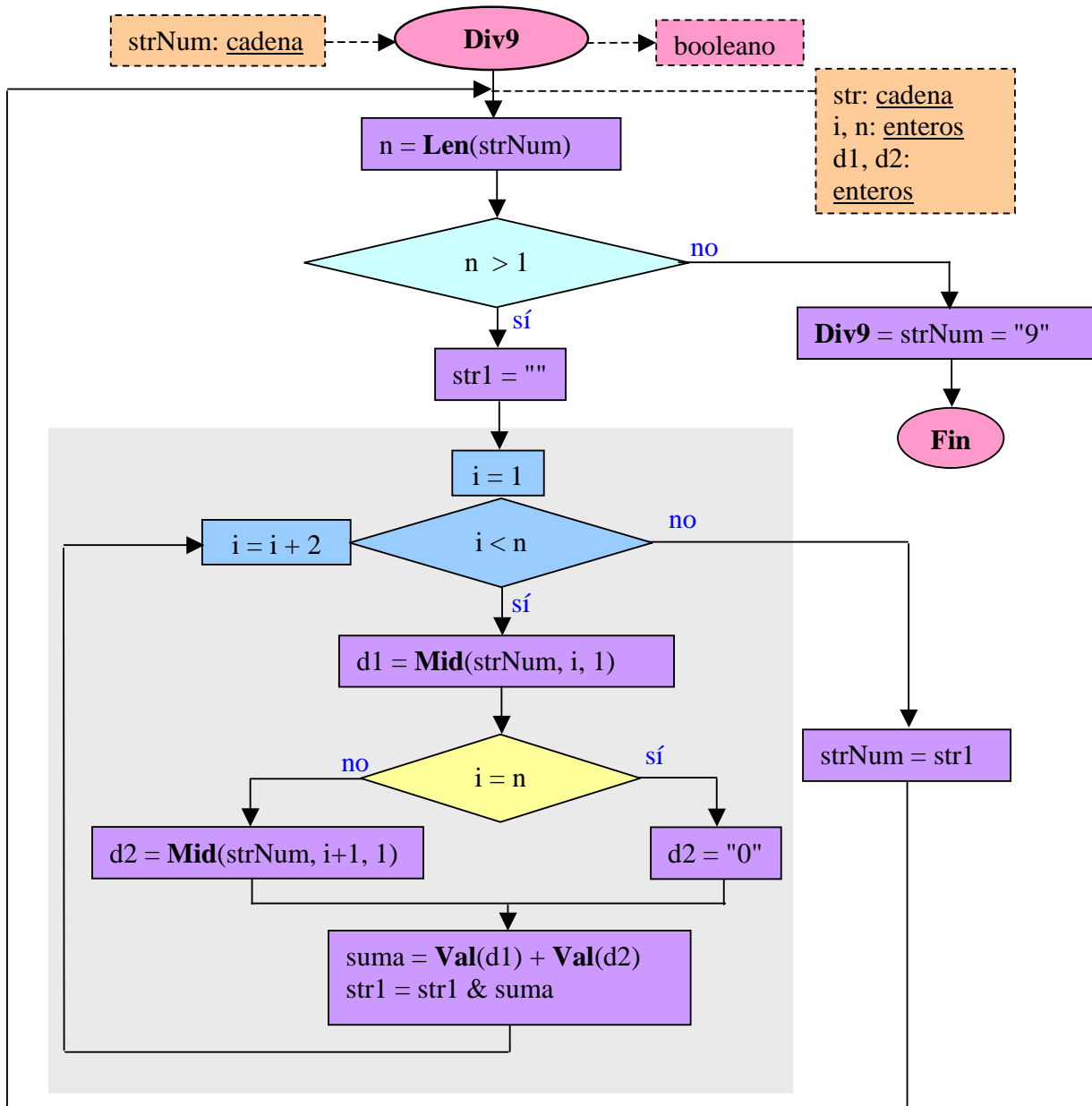
```
Function NomCia(ByVal cod As Integer) As String
    Select Case cod
        Case 0
            NomCia = "Otras"
        Case 1
            NomCia = "Globalfón"
        Case 2
            NomCia = "Estafónica"
        Case 3
            NomCia = "Demofonos"
    End Select
End Function
```

c)

```
Sub cmdOpe_Click()
    Dim num As String
    Dim cod As Integer
    num = InputBox("Introduce el número de teléfono")
    cod = CodCia(num)
    MsgBox ("La compañía es: " & NomCia(cod))
End Sub
```



3. (3 puntos)





Escuela Universitaria
de Ingeniería
Vitoria-Gasteiz

Ingeniaritzako
Unibertsitate Eskola
Vitoria-Gasteiz

Fundamentos de Informática
Examen – 3 de Septiembre de 2007
Mecánica y electricidad
Resolución



```
Function Div9(ByVal strNum As String) As Boolean
    Dim str1 As String
    Dim i As Integer, n As Integer
    Dim d1 As Integer, d2 As Integer
    Dim suma As Integer
    n = Len(strNum)
    While n > 1
        str1 = ""
        For i = 1 To n Step 2
            d1 = Mid(strNum, i, 1)
            If i = n Then
                d2 = "0"
            Else
                d2 = Mid(strNum, i + 1, 1)
            End If
            suma = Val(d1) + Val(d2)
            str1 = str1 & suma
        Next i
        strNum = str1
        n = Len(strNum)
    Wend
    Div9 = strNum = "9"
End Function
```



4. (3 puntos)

```
Sub cmd1_Click()  
  Dim n1 As Integer, n2 As Integer, mn As Integer  
  Dim i As Integer, cnt As Integer  
  
  If IsNumeric(txt1.Text) Then  
    If IsNumeric(txt2.Text) Then  
      n1 = Val(txt1.Text)  
      n2 = Val(txt2.Text)  
      If n1 > n2 Then  
        mn = n2  
      Else  
        mn = n1  
      End If  
  
      cnt = 0  
      For i = 2 To mn Step 1  
        If n1 Mod i = 0 And n2 Mod i = 0 Then  
          cnt = cnt + 1  
        End If  
      Next i  
  
      If cnt >= 2 Then  
        MsgBox (n1 & " y " & n2 & " son aceptables")  
      Else  
        MsgBox (n1 & " y " & n2 & " no son aceptables")  
      End If  
  
    Else  
      MsgBox ("El número 2 no es numérico")  
    End If  
  Else  
    MsgBox ("El número 1 no es numérico")  
  End If  
End Sub
```