

Strings

Fundamentals of Computer Science

2010-2011

Ismael Etxeberria Agiriano

18/10/2010



Escuela Universitaria
de Ingeniería
Vitoria-Gasteiz

Ingeniaritzako
Unibertsitate Eskola
Vitoria-Gasteiz



Universidad
del País Vasco

Euskal Herriko
Unibertsitatea

Index Strings

1. Mid
2. Len
3. Ucase/Lcase
4. Len with Mid

1.1 Mid Function

- **Syntax**

- `Mid (str, ini, siz)`

- **Description**

- Obtains a substring from a string

- **Parameters:**

- `str`: **original string**

- `ini`: **starting position**

- `siz`: **(optional) size of the resulting string**

- **If not specified, until the end of the string**

1.2 Examples with Mid

```
Dim chk As String = "Text sample"
```

```
Mid (chk, 1, 1)      "T"  
Mid (chk, 2, 1)      "e"  
Mid (chk, 1, 2)      "Te"  
Mid (chk, 4, 3)      "t s"  
Mid (chk, 9)         "ple"  
Mid (chk, 9, 5)      "ple"  
Mid (chk, 0)         Error  
Mid (chk, 12)        " "  
Mid (chk, 50)        " "
```

2.1 Len Function

- **Syntax**
 - `Len (str)`
- **Description**
 - Obtains the length of a string
- **Parameters:**
 - `str: string`

2.2 Examples with Len

| | |
|--------------|-------|
| Len ("T") | 1 |
| Len (" ") | 0 |
| Len (" ") | 1 |
| Len ("Te") | 2 |
| Len ("43") | 2 |
| Len (43) | Error |

3.1 Ucase / Lcase functions

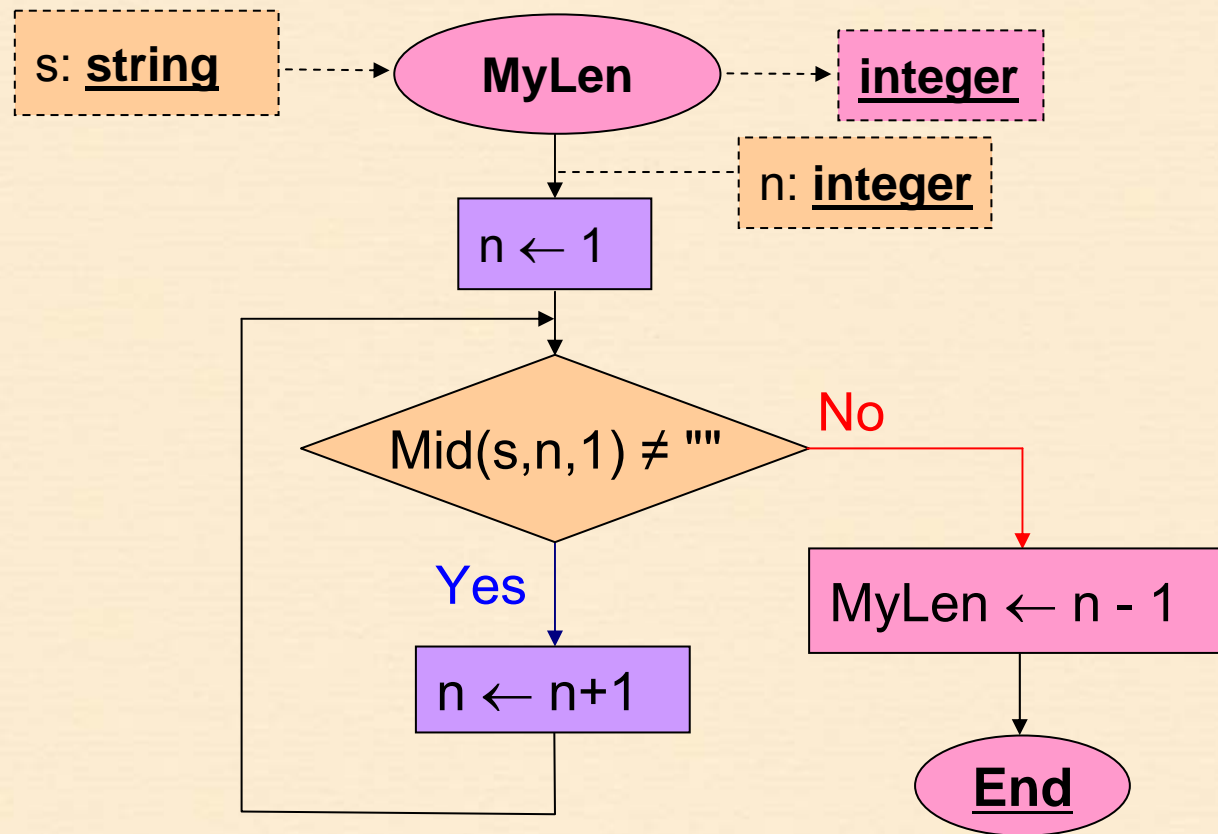
- **Syntax**
 - `Ucase (str)`
 - `Lcase (str)`
- **Description**
 - Converts a string into uppercase (`Ucase`) or lowercase (`Lcase`)
- **Parameters:**
 - `str`: **string**

3.2 Examples with Ucase/Lcase

| | |
|---------------------------------|-----------------------|
| <code>Ucase ("T")</code> | <code>"T"</code> |
| <code>Lcase ("T")</code> | <code>"t"</code> |
| <code>Ucase ("Hello")</code> | <code>"HELLO"</code> |
| <code>Lcase ("Hello")</code> | <code>"hello"</code> |
| <code>Ucase ("43")</code> | <code>"43"</code> |
| <code>Ucase ("España")</code> | <code>"ESPAÑA"</code> |
| <code>Ucase (43)</code> | <code>"43"</code> |

4.1 Len with Mid

- Calculation of the length of a string by using only Mid



4.2 VB implementation of MyLen

```
Function MyLen (ByVal s As String) As Integer
```

```
  Dim n As Integer
```

```
  n = 1
```

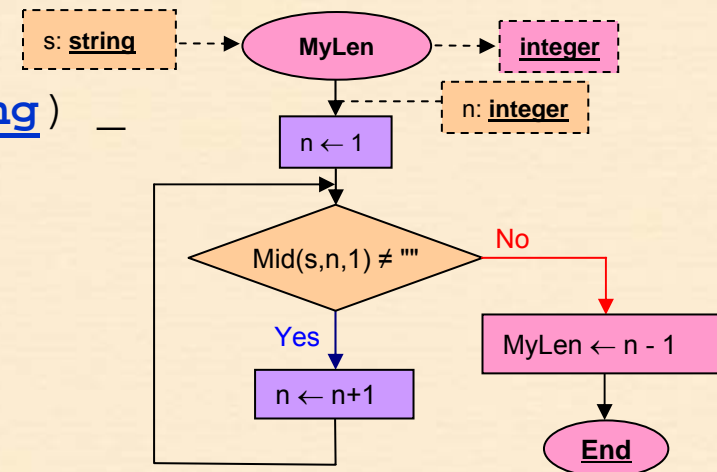
```
  While Mid(s, n, 1) <> ""
```

```
    n = n + 1
```

```
  Wend
```

```
  MyLen = n - 1
```

```
End Function
```

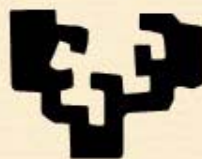




Escola Universitaria
de Ingenieria
Vitoria-Gasteiz

Ingeniaritzako
Unibertsitate Eskola
Vitoria-Gasteiz

eman ta zabal zazu



Universidad
del País Vasco

Euskal Herriko
Unibertsitatea