

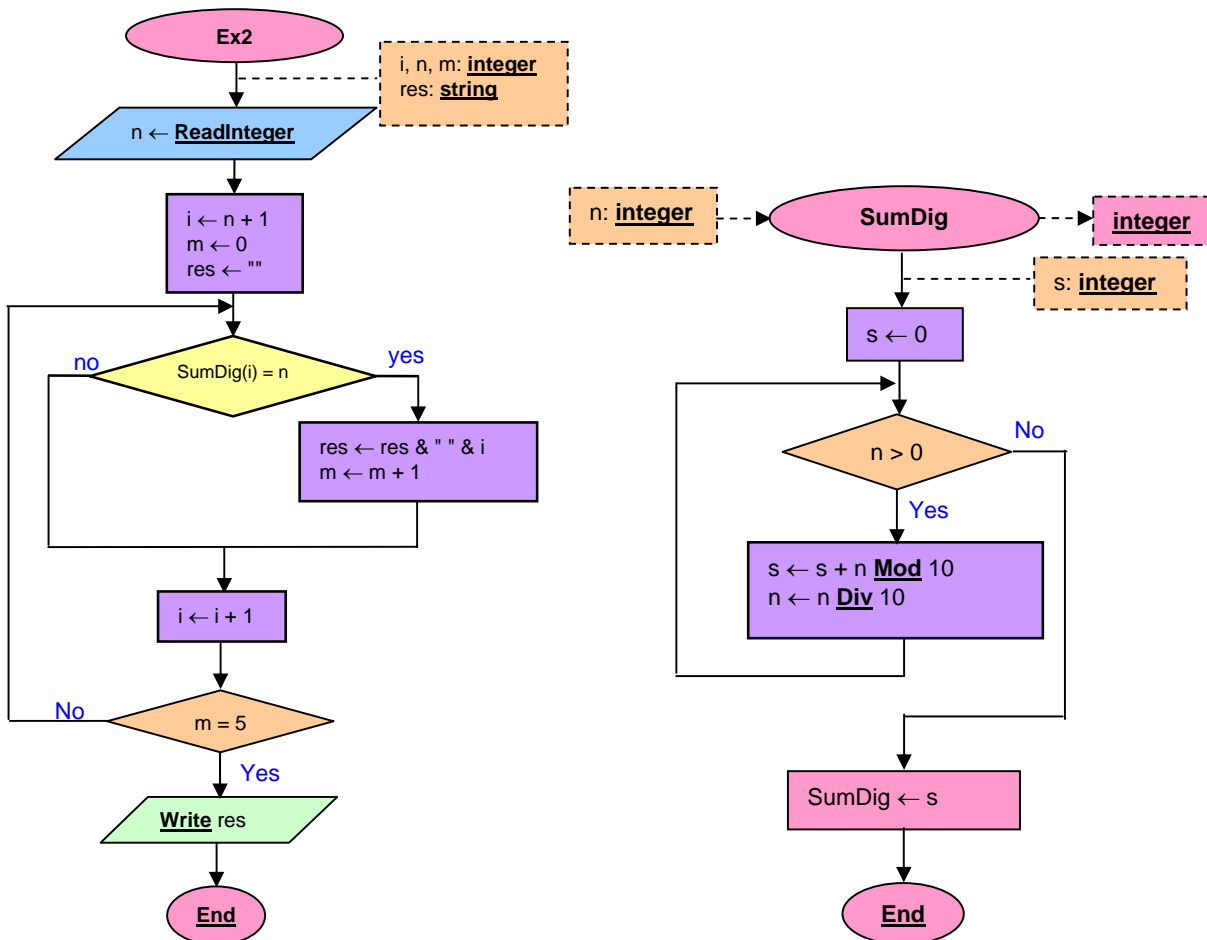
1. (1,5 points)

```

Sub cmd1_Click()
  Dim x As Integer, y As Integer

  pct1.Cls
  If Not IsNumeric(txt1.Text) Or Not IsNumeric(txt2.Text) Then
    pct1.Print "The operands are not numeric"
  Else
    x = Val(txt1.Text)
    y = Val(txt2.Text)
    If x <= 0 Or y <= 0 Then
      pct1.Print "The numbers are not positive"
    Else
      If x Mod y = 0 Then
        pct1.Print x & " is divisible by " & y
      Else
        pct1.Print x & " is not divisible by " & y
      End If
    End If
  End If
End Sub
  
```

2. (3 points) Decomposing:



3. (3 points)

a)

```

Function Titulise(ByVal s As String) As String
    Dim i As Integer, n As Integer
    Dim c As String ' Character
    Dim r As String ' Resulting sentence
    Dim p As Boolean ' if started by word

    p = True ' We are at the beginning
    r = ""
    s = LCase(s) ' The whole sentence in lowercase
    n = Len(s)
    i = 1
    While i <= n
        c = Mid(s, i, 1)
        If Not isSep(c) And _
            Not isSig(c) Then
            ' It's a letter
            If p Then
                r = r & UCase(c) ' First letter in uppercase
                p = False ' First letter put
            Else
                r = r & c ' Add lowercase letter
            End If
            i = i + 1
        Else ' Separator or sign
            p = True ' Word finished
            While esSep(c) Or esSig(c)
                ' Signs are directly copied, separators are ignored
                If isSig(c) Then
                    r = r & c
                End If
                i = i + 1
                c = Mid(s, i, 1)
            Wend
            ' Add a space being
            ' because one or more separators become one
            ' it comes after a punctuation sign
            r = r & " "
        End If
    Wend
    Titulise = r
End Function

```

b)

```

Sub cmd1_Click()
    Dim sent As String

    sent = txtFrase.Text ' Read the non-normalised phrase from a field
    txtNorm.Text = Titulise(sent) ' Write normalised phrase on another
End Sub

```

4. (2,5 puntos)

```
Sub MergeVector(ByRef v1() As Double, ByVal n1 As Integer, _
                ByRef v2() As Double, ByVal n2 As Integer, _
                ByRef v3() As Double, ByRef n3 As Integer)
    Dim i1 As Integer, i2 As Integer, i3 As Integer
    i1 = 1
    i2 = 1
    n3 = n1 + n2
    For i3 = 1 To n3 Step 1 ' Copy n3 elements in total
        If i1 > n1 Then ' If copied all vector v1
            v3(i3) = v2(i2) ' copy current element of v2
            i2 = i2 + 1 ' increment index of v2
        ElseIf i2 > n2 Then ' Equivalent if copied all v2
            v3(i3) = v1(i1) ' ==
            i1 = i1 + 1 ' ==
        ElseIf v1(i1) < v2(i2) Then ' Compare the elements
            v3(i3) = v1(i1)
            i1 = i1 + 1
        Else
            v3(i3) = v2(i2)
            i2 = i2 + 1
        End If
    Next i3
End Sub
```